

Installation Guide



WHERE ARE WE

Calle Dinámica N°1, Pol. Ind. Santa Rita
08755 Castellbisbal, Barcelona SPAIN



CALL US

Ph +34 918 315 425
Fax +34 937 720 018



DOWNLOAD



faro@lorefar.com
www.faro.es



FOLLOW US





Technical specifications

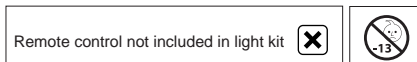
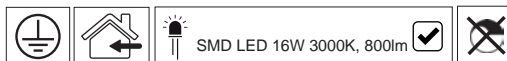
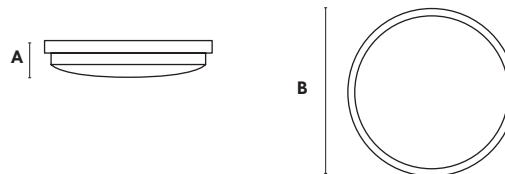
light kit	
material	Metal + PC
finished	33471K - white 33491K - grey 33492K - brown

power	
V	220-240
Hz	50

Weight	
kg	0.28
lb	0,62

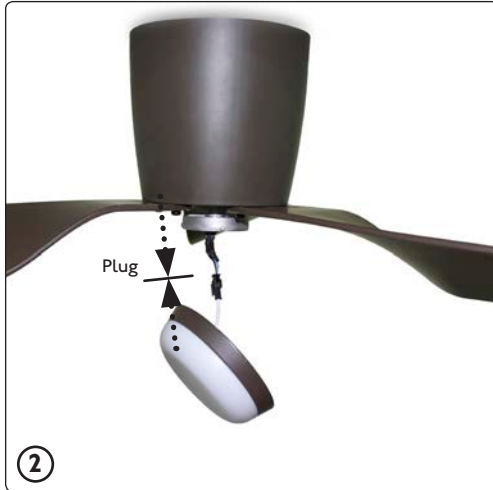
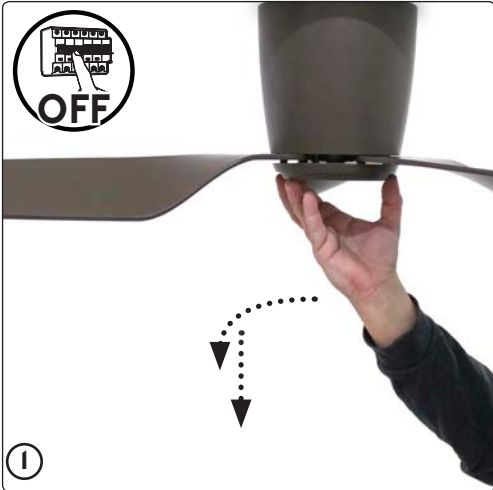
Light Kit for Pemba

sizes mm/inch	
A	40 / 1,57"
B	Ø130 / 5.11"



* Remote control with ceiling fan

Installation



F A R O
B A R C E L O N A 